



Fully Integrated Test Control

The integrated control, data capture, and reporting of XCP TECHNOLOGY directly supports the accountability and traceability needs of today's testing environments.

Like all CFR Engines Inc. products, XCP TECHNOLOGY is designed, manufactured, and tested to work as part of an integrated and reliable solution for your operation. The engine, parts, accessories, instrumentation, control system, and upgrade options are all provided by CFR to operate together with seamless efficiency.

Compliance

Built with flexibility to run customized test procedures or conduct tests that are fully compliant to all procedures of the current ASTM Methods:

- D2699 – Research Octane Number
- D2700 – Motor Octane Number
- D613 – Cetane Number

Speed

Reduced operator interactions and computer guided compliance to test methods deliver faster results and more instrument productivity.

Flexibility

XCP TECHNOLOGY offers the greatest flexibility for octane testing with easy software switching between RON or MON test methods. Additionally, XCP comes standard on units and has the ability to run all four ASTM procedures (EQ, FL, CR, and OA).

Accountability

The singular modern XCP system replaces individual manual controls to provide a more intuitive and easier to use instrument, by a variety of operators, for more dependable tests.

- Intuitive and complete interface with guided test set up, clear visual displays, and simplified operation procedures
- Real-time data recording of all engine parameters and test performance data
- Clearly defined results are automatically reported incrementally at each critical step of the test and in conclusion at the end of the test
- Full engine monitoring with modern instrumentation allows isolation and close monitoring of key systems
- Detailed and traceable reports are automatically built with complete data tables, performance graphs, and summarized results



Standard for Octane & Cetane Units

XCP TECHNOLOGY remains the modern instrumentation of choice for octane and cetane testing. CFR continues to apply advances in design, measurement, and control to its XCP TECHNOLOGY platform. The XCP Digital Control Panel brings advanced functionality, increased automation, enhanced documentation capabilities, and future expansion opportunities to CFR fuel rating units. Designed with the operator in mind, the XCP panel is intuitive, easy-to-use, and accommodates users of all skill levels.

XCP TECHNOLOGY is standard equipment on all octane and cetane rating units and can be retrofitted to most existing CFR units.

Configurations

Upgrade kit for existing units:

p/n: G-802-51 - F1/F2 Octane XCP Upgrade Kit

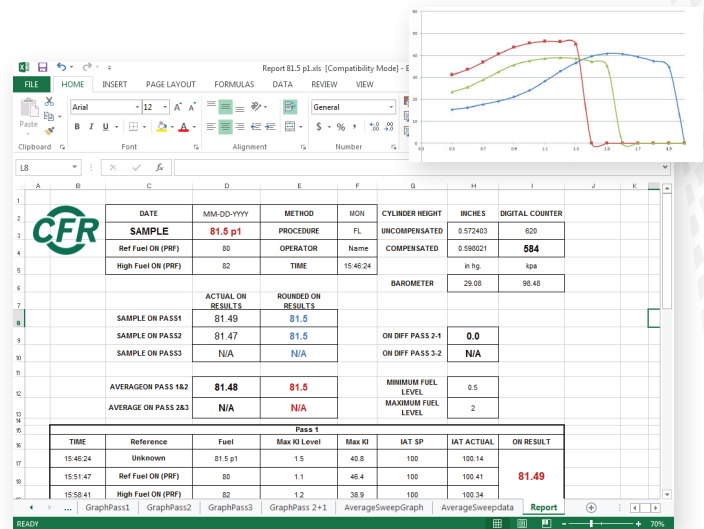
p/n: G-802-53 - F1/F2 Octane XCP with OA Upgrade Kit

p/n: G-802-57 - F5 Cetane XCP Upgrade Kit

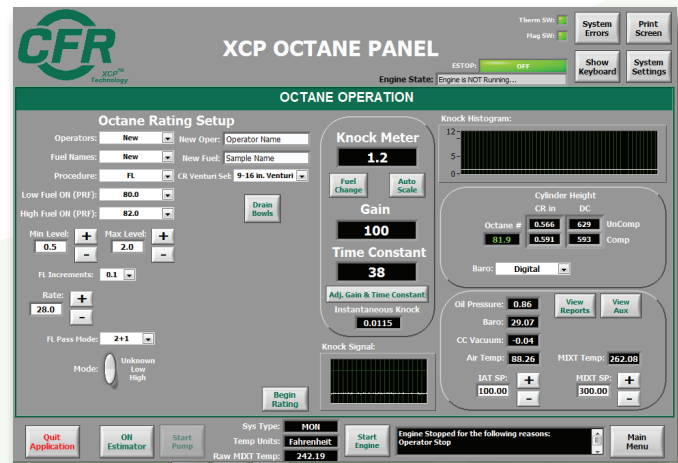
XCP TECHNOLOGY is standard supply on all new unit orders.

Specifications

- Touch Screen HMI with Industrial PC
- Microsoft Windows 10 Operating System
- LIMS Connectivity via Microsoft Excel
- Bolt-on Configuration to Existing Units
- Power Supply: 120V, 1 Ph, 50/60HZ
- Desk with Wireless Keyboard & Mouse



All XCP TECHNOLOGY comes standard with on-board data capture and reporting



XCP TECHNOLOGY provides complete control and flexibility over test parameters and results

CFR Engines, Inc.
N8 W22577 Johnson Drive
Pewaukee, WI 53186

E: info@cfrengines.com
T: +1 262 501 5998
www.cfrengines.com

Form C440, Revision B

